

INSTRUCTION for the Pocket Wi-fi(GP02-rev)

1.Charge Battery

- a) From wall socket(outlet). Full charge takes 4 hours
- b) From PC(USB)
Full charge takes 6 hours

2.Power On/Off

Power on

Push Power button 5sec to turn on the device. The device will automatically connect to 3G network.

Power off

Push Power button 5sec to turn off.



★Saving mode

The pocket WiFi will automatically switch to energy saving mode if not used for around 10minutes press the power button for 1sec. to turn it back on.

3. Set up Wi-Fi for Laptop or iPhone/iPad

a) For Laptop

- Select Control Panel from “Start Menu”
- Select “Network and Sharing Center”, then click Connect to Network.
- Select SSID “GP02-xxxx” or back of the pocket wifi then click connect.
- Type in WEP key. Your WEP key is on the back of Pocket Wi-Fi device. Then save.

b) For iPhone/iPad

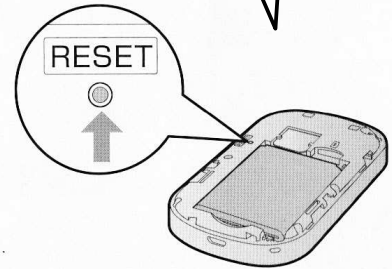
- Select Settings icon and General, then touch ”Network” and Wi-Fi.
- Select SSID “GP02-xxxx” or back of the pocket wifi then click connect.
- Type in WEP key. Your WEP key is on the back Pocket Wi-Fi device. Then save.

Reset Pocket Wi-Fi
If you have any issues, Please reset Pocket
Wi-Fi Device as following.

(Some PW doesn't have reset)

Please open the battery cover,
then press reset button.

Don't push
it too
much.



Return Checklist

1. Pocket Wi-Fi device.
2. AC charger
3. USB cable
4. This Manual

- Prohibited Actions -

- Do not open Pocket Wi-fi.
- Do not remove SIM Card from the device.
- Do not use the device outside Japan. If you do, you will be charged the expensive roaming fee.

Support center
Phone 080-3452-7100

(Start from the other side)